

What you need to do to get help

Call us: 305-243-5330

Email us: mailmanfamnavigator@miami.edu

Visit our website:
<http://pediatrics.med.miami.edu/mailman-center/family-navigator-program>

Complete this form and drop it in the **Family Navigator** box located at the Front Desk

One of our Family Navigators will contact you in 3-5 business days.

Child's Name

Parent/Caregiver's Name

Phone

Email

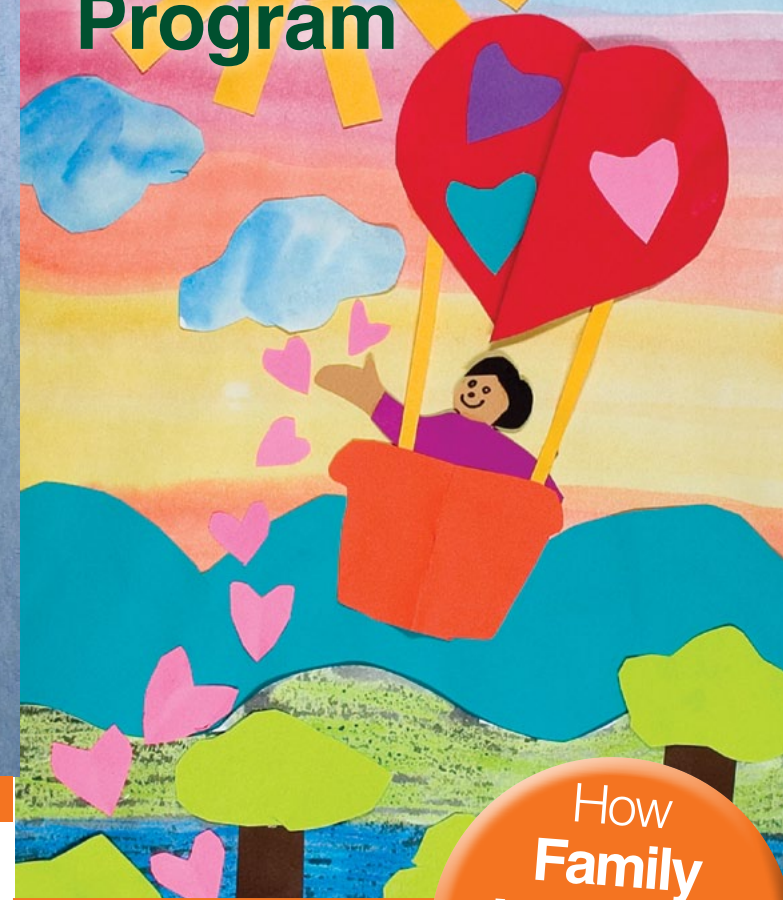
Our Family Navigators are parents of special needs children who understand how to navigate the system and have experience in the steps needed to get services for children and families.



This program is really helpful for families facing difficult moments. It opens a door to several resources that help families to move on.

Mailman Center for Child Development

Family Navigator Program



How **Family Navigator** can help your family.

Strengthening and empowering families through support, connection and education.



Family Navigator Program
University of Miami Miller School of Medicine
Department of Pediatrics,
Mailman Center for Child Development
Family Navigator Program: 305-243-5330
Email: mailmanfamnavigator@miami.edu

pediatrics.med.miami.edu/mailman-center/family-navigator-program

The Family Navigator program is generously supported by a gift from the Taft Foundation.



The Family Navigator Program helps families find resources for their children. This program is at no cost for families.

The Family Navigator Program will guide you in taking the steps needed to get services your family may need.

Mailman Center for Child Development
University of Miami Miller School of Medicine

We understand that raising a child with health care needs and/or disabilities can be difficult and frustrating due to the complexity of the health care system.

What do Family Navigators do?

- Listen and learn about your family strengths and needs.
- Connect you with appropriate resources.
- Help you determine “next steps” for your family.
- Answer any questions you may have.
- Offer you one-to-one peer support.



Family Navigators can help you learn more about:

- School issues
- Intervention and therapies
- Health insurance
- Recreation / after-school programs
- Legal services
- Parent support
- Housing
- Nutrition/wellness
- Transition to adulthood

Improving the lives of people with disabilities and their families through innovation, impact, and connection.

The Mailman Center is designated by the US government as a University Center of Excellence in Developmental Disabilities (UCEDD).

We address the concerns of individuals with developmental disabilities and special chronic health care needs through research, clinical service, training, community outreach and advocacy.



“I am grateful for the help. This is a unique program where you find human touch, empathy and understanding.”



Thanks to the ArtAbilities program, a partnership between Miami-Dade County Public Schools' Art Department and The Mailman Center for Child Development.

Contact
Family Navigator
to help your family.